

Installation Procedures:

Suitable for Professional or DIY.

Tools needed to fit "On Guard"

1. Left and right cut Aviation snips are recommended.
2. Rubber mallet
3. Builders square and pencil
4. Pliers or Multi Grips

Step 1. Beginning at a corner (any corner,) lay the On Guard section on the roof and match it to the roof making sure that the profile lines up.



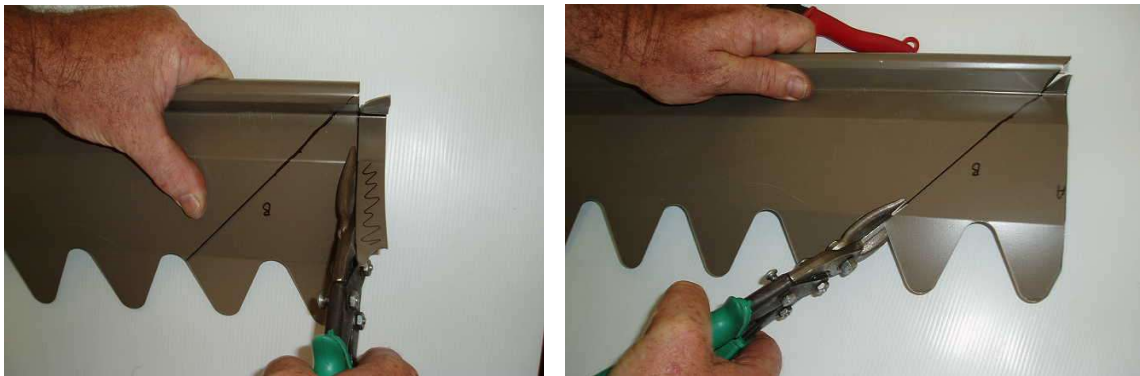
Step 2. Mark the outside edge of the On Guard section to match the outside edge of the gutters' rolled edge.



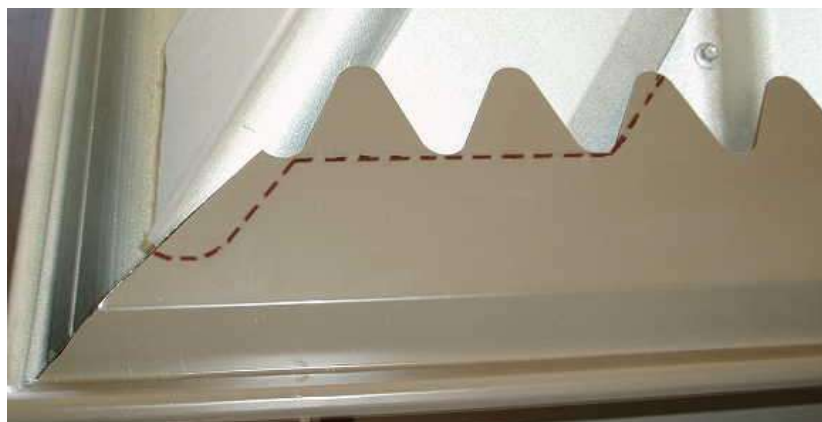
Step 3. Lay the marked On Guard section flat on a cutting table or bench with the marked edge upwards. With a square, mark a line at 45 degrees from the rolled edge of the On Guard section to the laser cut edge as shown.



Step 4. Using left and right Aviation snips, first cut the excess length off then cut the 45 degree angle as shown.



Step 5. Line up section again to match roof profile (as in step 1) and mark around ridge hip capping end for cutting to fit.



Step 6. Place On Guard section onto bench and using snips, cut excess piece out for fitting around ridge capping. In order for this to fit neatly some final adjustments may be necessary. To fit, a tap with a rubber mallet may be needed.



Step 7. Now that the corner piece is installed, butt the next On Guard section up to be fitted. Check to see that it matches the roof profile and that the two sections are butted together neatly (although a 1mm-2mm gap is acceptable). If this piece does not align exactly, some trimming may be done from the butting edge in order to match the profile (On Guard sections are made a several millimetres longer than needed for this purpose as sometimes roof decking can be unevenly fitted.) Continue to check the alignment as you work around the gutters, referring to **Steps 1-5** when reaching the corner

Things to watch for:

Steel or ColorBond Roof? On Guard should fit firmly to the rolled edge of the guttering as this is the means by which it is held in place and is designed to fit snugly into the profile of your roof type, leaving little or no room for small nuts or leaves to enter your gutters. If your roof type is CGI there may be a need to use Tek screws to fix it to the roof for extra protection and strength especially if there is not enough gutter brackets fitted to the guttering and so if this becomes necessary then follow the steps on page 6 (c).

Tiled Roof? Beware of tile movement, sometimes there may be a need to realign the first two rows of tiles in order to straighten them up. This can be done by gently tapping them on the side with a rubber mallet.

PROBLEM: I. "On Guard" is not sitting down properly!

(a). The "On guard" section may be coming in contact with the gutter bracket, this can be checked by placing a piece on the guttering and looking underneath to see if they are making contact or look for signs on the underside for slight marking.

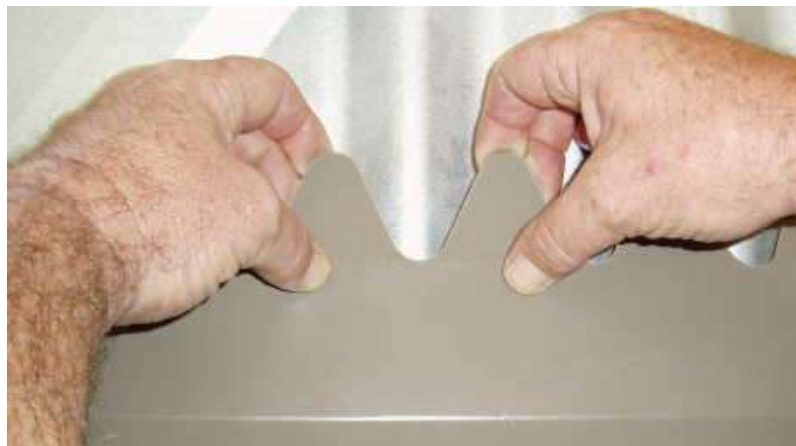
REMEDY: Lift "On Guard" off and grip the rolled edge over the bracket with pliers and by pushing away from you bend the bracket down. "On Guard" section should now seat correctly with the bracket in a lower position. In some cases it may be necessary to remove or release the bracket and use a Tek screw to fix On Guard to the roof as this will act as a support bracket, (see section (c) for fitting Tek screws)

(b). The rolled edge of the guttering varies in size and so it is sometimes necessary to squeeze the rolled edge of the gutter with pliers to make it smaller. **See page 5. Part (b)**



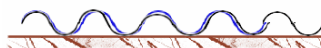
PROBLEM: 2. The On Guard sections are sitting very high leaving too much space for debris to enter underneath it!

REMEDY: Bend "Tongues" by hand either up or down depending on the pitch of the roof to suit. Be sure to bend the whole "Tongue" from the fold otherwise efficiency could be lost as the closer the fit the better On Guard works.



PROBLEM: 3 Profiles' don't match.

On Guard is made from high quality Colorbond steel and cut precisely by laser to match the CGI profile and does not change in the size of the pattern, however, roof profiles can vary in consistency of form, depending on how they were fitted i.e., sometimes screws, nails or clips have pulled the sheets down too tight causing a spreading of the sheets....this can cause profiles not to align.



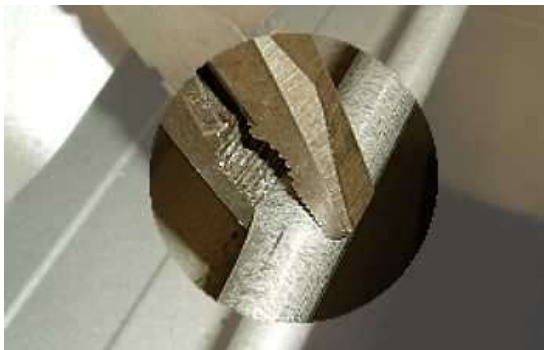
REMEDY: Using a builders square and pencil, mark the "On Guard" section where the pattern starts to diverge. Using the left and right snips, remove a thin strip at that point and install the piece that fits. *See diagram on next page.*



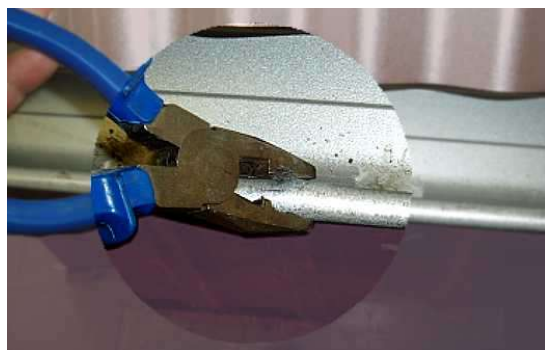
Lay the On Guard section in place and mark for cutting. Trim to fit and install. The off cut piece can then be placed in position, marked, trimmed and used as well.

PROBLEM: 4 On Guard doesn't seem to fit the rolled edge properly!
If there is a problem fitting On Guard onto the rolled edge of the gutters then follow the steps below.

REMEDY: (a) Too Loose? If loose fitting, using pliers, slightly open the rolled edge of the guttering at approx 150mm intervals, then refit On Guard sections *Left image below* (Be careful not to bend it too much as this will cause it to be too tight and won't sit down on roof)



To tighten



To loosen

(b) Too Tight? If the On Guard is too tight and hard to fit over rolled edge of gutter then you may need to squeeze the rolled edge of the guttering with a pair of pliers until it becomes smaller and On Guard will fit correctly, be careful not to make it too small as then it will be too loose. *Right image above.*

N.B On Guard should grip the gutter firmly enough to remain in place even in strong winds If you feel that you need to fix it to the roof (for CGI only) then see part (C)

(c) Tek Screws. Tek screws can be used as often as you like as it will not affect the flow of water entering your gutters so for fitting screws use Hex head 16mm drill points with neo washers as these are easily removed and replaced if needed. Using the illustrations below, fit the screws approximately 5-10mm from the edge of the On Guard section to the high point of the roof sheet.



PROBLEM: 5. The "Stop End" is coming in contact and won't allow it to sit down properly!

REMEDY: Cut out a small section as shown in the example below to fit over the top of it so as to have full coverage of the gutters.



On Guard's patented design will allow maximum water flow while maintaining a minimum space for debris to enter the guttering system. It is made so that it can be easily removed by simply lifting it up and pulling it off and then rolling it back over the rolled (or rounded) edge of the gutter so that at any time the guttering system can be inspected. If it is hard to fit over the rolled edge of the gutter then a good whack with the rubber mallet should suffice then simply squeeze the "V" section of the On Guard into the gutter with your hands to make it sit in place.